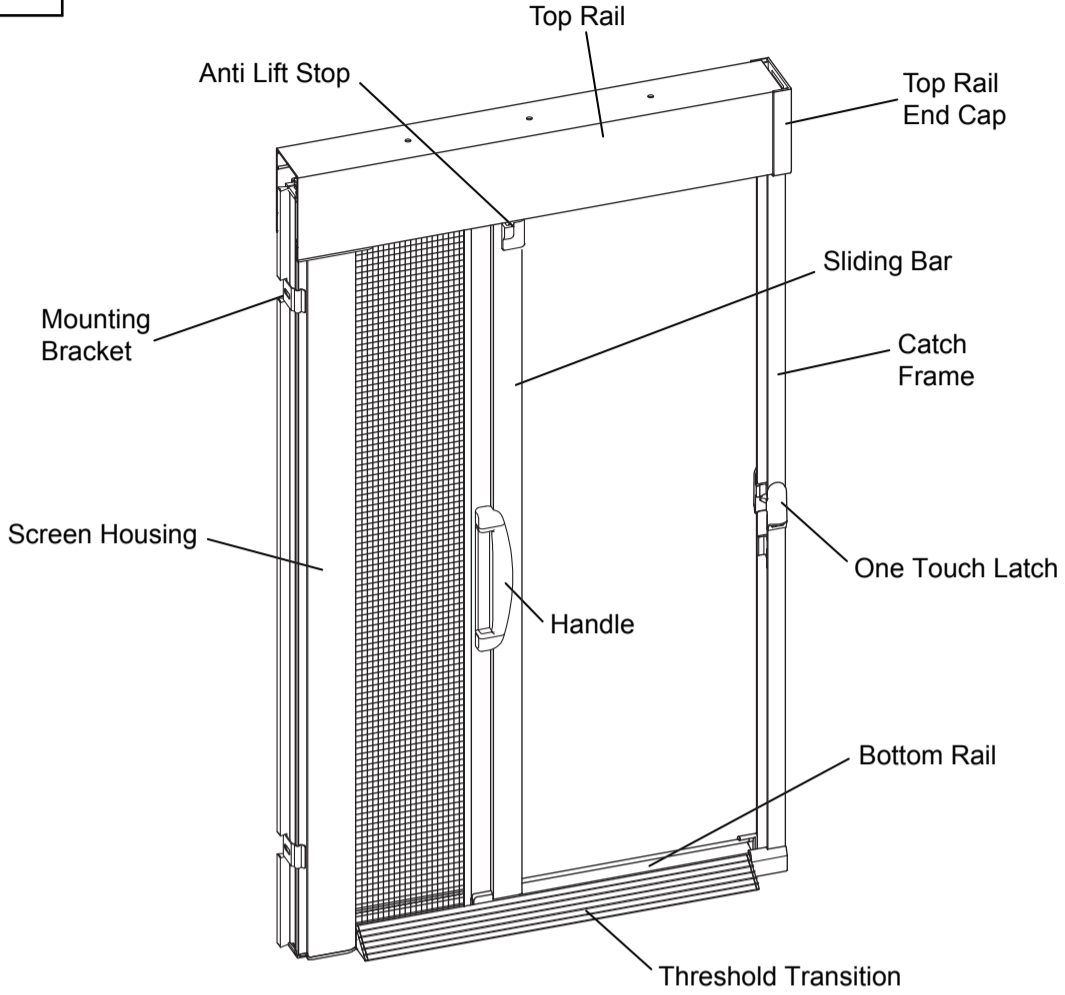


Installation Manual
Bella-View
 (Retractable Screens)



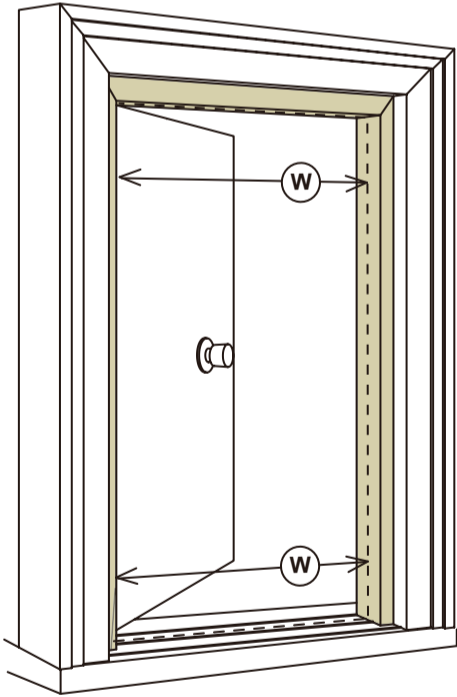
BV-AUG2013

Screen Components



Step #1 Measuring the width of the opening

- (1) Measure the dimension between the right and left sides of the door frame at both the top and bottom of the doorway. Record the smallest of the two in the box below.



Width (W)

Step #2 Determining the cutting length for horizontal components

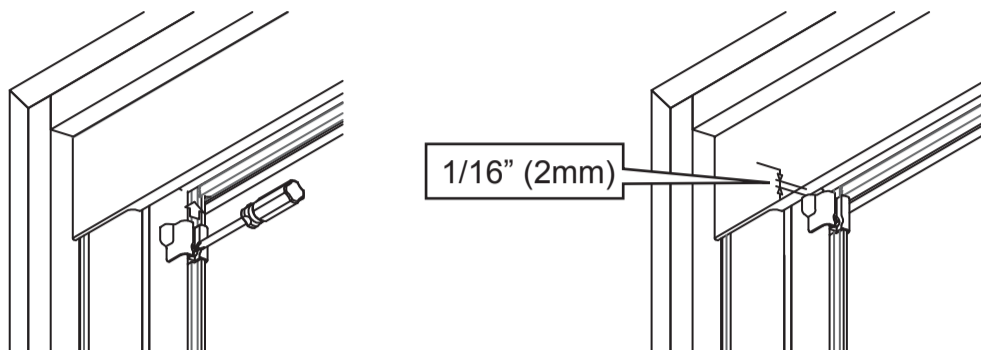
- (1) Determining the Length to be Cut from the Top Rail, Bottom Rail, Angle Spacer and Threshold Transition, using the following formula.

	(Measured Width)		(Length to be cut off)
36" (914mm) -	[]	=	<input style="width: 100px; height: 20px;" type="text"/>

Step #9 Final Steps

Adjusting the Anti Lift Stop

- (1) Loosen the set screw on the Anti Lift Stop on the Sliding Bar.
- (2) Slide the Anti Lift Stop upward until it is positioned approximately 1/16" (2mm) from the underside of the Top Rail.
- (3) Tighten the set screw to secure in place.



Installing the Top Rail Hole Caps

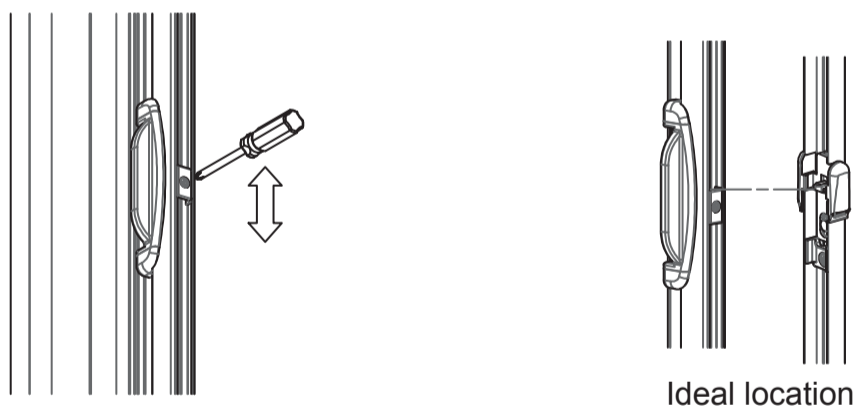
- (1) Snap the Top Rail Hole Caps into the slot on the underside of the Top Rail from the front and the back side of the Screen Housing.



Adjusting the Catch

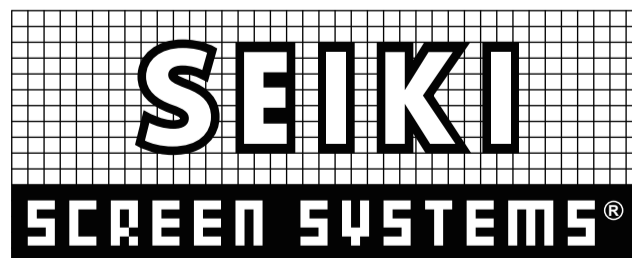
Note; only in the case the Latch doesn't make a secure contact with the Catch, adjust the location of the Catch in the following procedures.

- (1) Loosen the screw on the Catch.
- (2) Move the Catch up and down until the Latch makes a secure contact with the Catch. (Refer to the "Ideal location" below.)
- (3) Tighten the screw to secure in place.



Congratulations! You have now completed the installation!

Designed & Manufactured by Seiki Screen Systems®



Seiki Screen Systems
www.seikiscreensystems.com